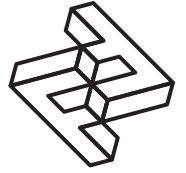
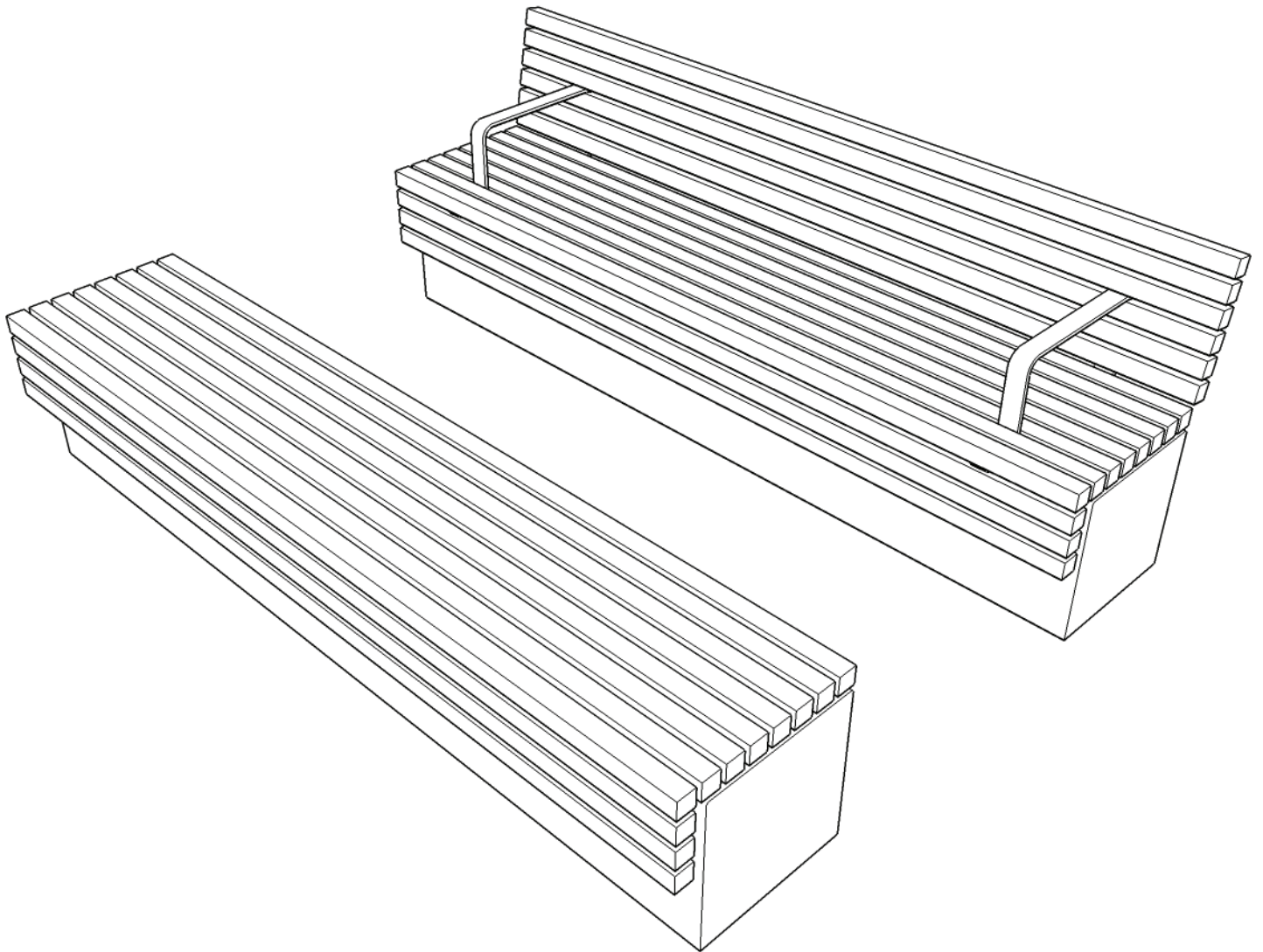

FACTORY FURNITURE



TORD wall bench & seat



Operation & Maintenance Manual

Factory Furniture Ltd | 5 Pioneer Road | Faringdon | Oxfordshire SN7 7BU | T +44 (0)1367 242731
hello@factoryfurniture.co.uk | www.factoryfurniture.co.uk

We reserve the right to change specification without notice. © 2017 Factory Furniture Ltd

Introduction

Design

Design, shop drawings and development by Factory Furniture Ltd.

Manufacture

Factory Furniture manufactured components. Products are assembled in Factory workshops, checked and dispatched ready for installation. Replacement products or components thereof should be ordered direct from Factory Furniture Ltd.

Copyright

The design copyright for the product and drawing copyright remains the sole property of Factory Furniture Ltd.

General Specifications

Bench

Metric length 2300mm | width 475mm | height 230mm *

Imperial length 7' 6½" | width 1' 6½" | height 9" *

* *Recommended seat height - 450mm (1' 5½")*

Approx Weight 67kg

Fixing Centres 1800mm (5' 11") x 185mm (7½")

Seat *(with back and armrests)*

Metric length 2300mm | width 595mm | height 585mm *

Imperial length 7' 6½" | width 1' 11½" | height 1' 11" *

* *Recommended seat height - 450mm (1' 5½")*

Approx Weight 109kg

Fixing Centres 1800mm (5' 11") x 185mm (7½")

Detailed Material & Finish Specifications

Seat Slats *(Also Backrest slats - TORD wall seat only)*

- Manufactured from FSC® certified tropical hardwood
- Slats are profiled and left untreated as standard (oil or microporous woodstain treatment available on request)
- Slats screwed to bench / seat frame (4 no. fixing points per slat)



Frame Assembly

- Manufactured from mild steel *(all welded construction)*. Frame is hot dip galvanised
- 2 off frame assemblies per bench / seat
- Anchored through frame using M10 x 30mm button head bolt into M10x125mm stainless steel resin fix anchor insert (4 no. per bench / seat)

General Maintenance *(Recommended Schedule & Guidelines)*

Daily/Weekly/Monthly *(or as adopted)*

Visual checks of bench / seat top, back and frame - check all items for superficial or physical damage.

Three Monthly

Clean all items as detailed below check all fixings are seated correctly; inspect timber for serious damage and splinters.

Six Monthly

Secure all fixings; full clean as detailed below; check that bench / seat is firmly secured to the plinth / wall

Specific Maintenance Details

FSC Timber

Clean with a stiff brush once per year, especially in more exposed locations, in order to prevent a verdigris type build up on the timber surface. Ideally this should be completed in early spring. During the cleaning stage, all exposed timber surfaces should be inspected for splits and splinters. Any splinters and graffiti should be removed and the surface sanded with 100 grit sandpaper in order to remove any uneven / sharp edges or surfaces.

During the first few months after installation the tannin naturally occurring in the timber may leach out and cause a brown staining on the bases. This may be removed with a light solution of household bleach and water.

Galvanised

For general cleaning using a damp cloth and warm soapy water only. Scourers and abrasive cleaners are NOT suitable for this type of finish and may damage it. Before using any cleaning agents to remove graffiti etc. try on a small, inconspicuous area first to avoid causing more unsightly damage.

Repairs

FSC Timber

For light damage, please see section on specific maintenance details above. For instances of heavy damage, the timber item should be replaced. Please order against the part number reference in the reordering section towards the end of this manual.

Galvanised Surfaces

For light damage to hot dipped galvanised finishes repair using a high performance cold galvanising zinc spray (70% zinc or above). Spray application should be carried out in accordance with approved methods detailed by the product manufacturer. Please note that it is advisable to use professional painters to achieve best results when touching up larger areas.

Heavy Damage

In the event of serious damage to any component, replacements should be ordered from Factory Furniture Ltd. Should further assistance be required (or if the product needs to be disassembled for any reason), please contact Factory Furniture for detailed technical advice.

Contacts

Factory Furniture Ltd
5 Pioneer Road
Faringdon, Oxon
SN7 7BU UK

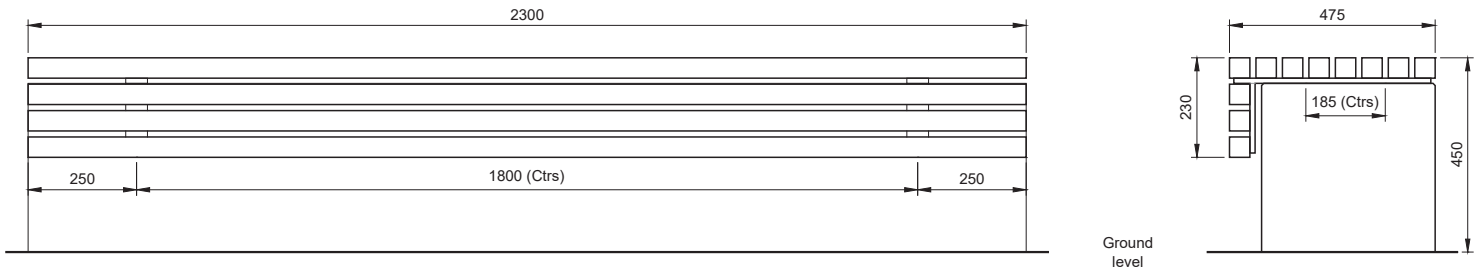
Tel +44 (0) 1367 242731

Email hello@factoryfurniture.co.uk

Web www.factoryfurniture.co.uk

Installation Instructions

ALL INSTALLATION WORKS TO BE CARRIED OUT BY COMPETENT PERSONNEL - INSTALL AS COMPLETE UNIT



Tord Wall Bench (same fixing centres for seat)

Tord Wall Bench / Seat

1. Install suitable plinth / wall (see illustration for recommended minimum plinth dimensions)
2. Screw stainless steel resin anchor inserts onto concealed M10 x 30mm bolts protruding through frame. Anchors should be finger tight. (4 anchors per bench / seat).
3. Place bench / seat in desired position on plinth / wall (balanced on anchor inserts). Carefully mark around anchors to obtain hole positions
4. Remove bench / seat; drill holes 25 dia. x 150mm deep; clear debris from holes.
5. Ensure at this stage that anchor bolts are loosened - allow about 2mm play to allow for final tightening once the resin has cured.
6. Fill the holes in the plinth / wall to within approximately 50mm from the top with Hilti HY150 resin (or similar).
7. Lift the bench / seat (with resin anchors in place) and carefully lower the anchors into the holes, leave for two hours before tightening (or as per manufacturer's instructions).
8. Once resin has cured: tighten anchor bolts to securely fasten down bench / seat. (Concealed anchor bolts are accessible for final tightening through the gaps between the slats.)
9. Check level

IMPORTANT NOTE:

Ensure that stainless steel is protected during site cutting of stone – contamination from disc cutters will produce corrosion on stainless steel components.

